

Beer server

Ultrasonic stand-up beer server

Instruction manual

green house

Precautions for safe and proper use
(Please read this manual carefully before using this product.)

⚠ DANGER! Failure to observe the precautions in this indication may result in death or serious injury.

●If defects such as smoke, heat, unusual smell, or unusual noises occur, stop operating the handle and using the beer server. If you continue to use it, it may result in fire, injury, or burns. After confirming that there is no longer smoke, heat, unusual smell or noise, remove the batteries and contact the shop where you purchased the product.

⚠ WARNING! Failure to observe the precautions on this indication may result in death or serious injury.

●Do not disassemble the unit except to insert the batteries, the canned beer, or clean the unit. ●Do not make any alterations. ●Do not use canned beer that is deformed. ●Do not dump, plunge, throw, or drop it. ●It should only be operated by a parent or guardian so that children and infants are not unsupervised. ●Do not place it in an unstable location. ●Do not place it in a high temperature area, such as near a heat appliance or in direct sunlight. ●Do not lift, lower, turn upside down, or move the product while it is in use. ●Be sure to insert the specified battery in the specified direction before using it. ●Do not use a combination of different types of batteries, such as unused and used batteries, or batteries from different manufacturers. ●Once the battery is set, close the battery cover securely. ●When not in use for a long time, remove the batteries. ●Do not heat the battery, disassemble it, or put it in water or fire. ●Keep the batteries out of the reach of children and infants. ●Do not put the unit in the refrigerator. ●Do not use in the microwave oven. ●Do not use for any purpose other than pouring a bottled/canned beer.

⚠ CAUTION! Failure to follow the precautions on this display may result in injury or damage to property.

●Do not injure yourself with the mouth of a canned beer. ●Be sure to install all units securely. ●Do not use the tube when it is pinched or crushed. ●Do not apply undue force to the control handle, and do not tilt it to any side other than the front or back side. ●Since it comes in direct contact with the beer, to keep it clean, always wash the main unit, tubes, packing, lower unit and tray cover before and after use. ●Use dish detergent to clean the main unit, tubes, packing, lower unit, and tray cover, and do not use solvents or industrial detergents such as benzene or thinner. ●Use a soft sponge to clean the main unit, tubes, packing, lower unit and tray cover, and do not use a metal scrubber, polish, cleanser or chemical razor. ●Once the packing is removed, install it securely. ●Do not rinse the top unit with water. ●For severe stains, soak a soft cloth in water and wring it out thoroughly before wiping it off. ●Do not use dishwasher or dish dryer. ●After cleaning, please dry well.

Restrictions

●Do not consume alcohol under the legal age in your area and please drink responsibly. ●Beer not included. ●Please read the caution notes on the canned beer before using it. ●It is for use only with 12oz or 16oz canned beer, low-malt beer, beer-like products, and non-alcoholic beer, and should not be used with other beverages. ●Beer may spill or splash around when pouring or removing the tube from a canned beer. ●Batteries not included. ●Do not use this product for business purposes. ●All other company and product names are trademarks or registered trademarks of their respective owners. ●The design and specifications of the product are subject to change without notice due to improvements. ●The color of the product image may differ from the actual product.

Disclaimer

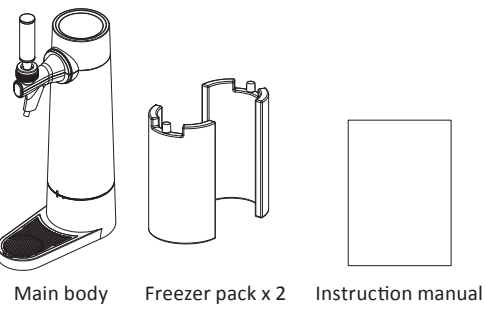
●We are not responsible for the use of the product if it is not used in accordance with the instructions in the instruction manual or packaging. ●We are not responsible for any damage caused by external factors such as drops, shocks, pressure, or loads. ●We are not responsible for any damage caused by natural disasters such as fire, earthquake, lightning, wind and water damage. ●We are not responsible for any failure due to wear from use. ●We cannot be held liable for any loss of business profit associated with the use of the product. ●We are not responsible for any failure of the related equipment during use of the product. ●We are not responsible for any inability to use the product due to compatibility with the relevant equipment.

About freezer pack

●Non-food, do not eat. ●Freeze it in the freezer for at least 8 hours before using it. ●It may be damaged by dropping or jostling. ●Rapid freezing may damage or deform it. ●If the contents leak, do not use and rinse the leaked contents with water. ●Do not leave it in direct sunlight. ●Do not heat it or place it near a heat source. ●Do not use in microwave oven. ●Condensation may form on the surface due to the temperature difference from the outside air. ●Keep out of the reach of children and infants and away from pets.

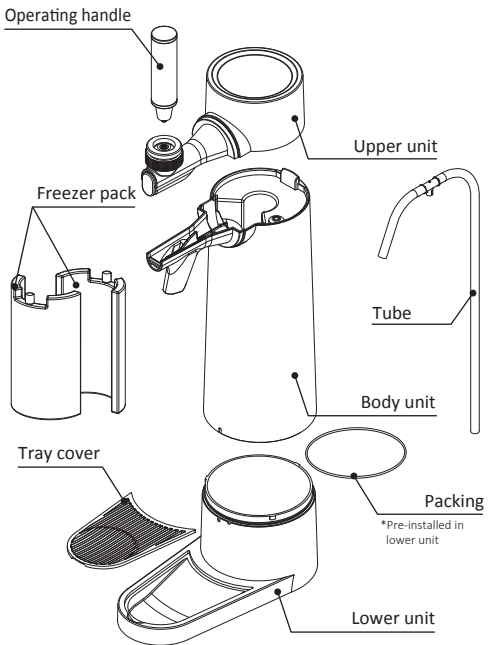
Contents

Please make sure all of the following items are included in the package.



Name of each part

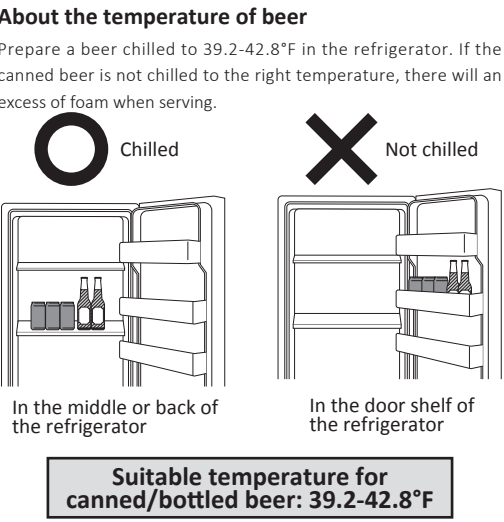
The operating handle is included in the package in the detached form. Once the product is removed, attach the operating handle to the upper unit.



Supported can and bottle sizes



To enjoy a thick foam



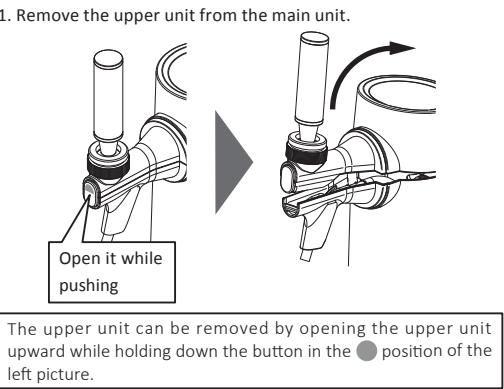
Canned/bottled beer should be chilled in the center or back of the refrigerator as it may not be chilled sufficiently in the refrigerator door shelf. Adjust the setting temperature so that the canned beer is at a suitable temperature of 39.2-42.8°F, as too high or too low a setting temperature in the refrigerator will not produce thick foam.

About the temperature of the serving glass

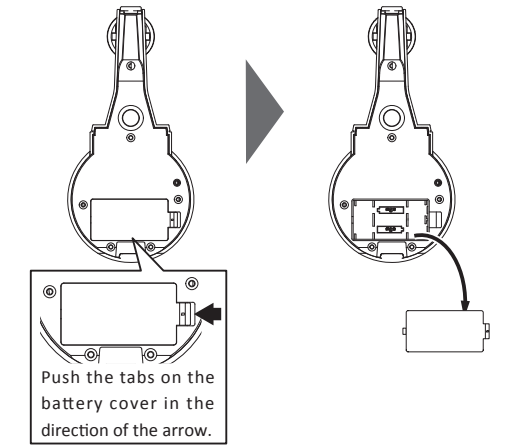
If the glass is dirty or warm, there may will an excess of foam when serving, and it may not produce thick foam.

How to set the battery

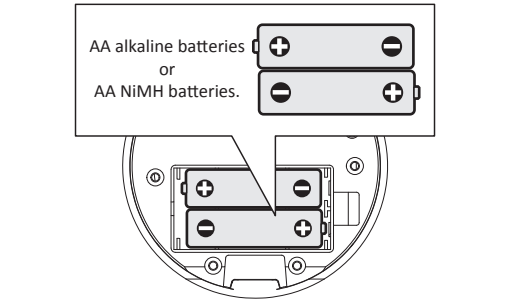
●Be sure to set the specified battery in the specified direction before using it. ●Do not use a combination of different types of batteries, such as unused and used batteries, or batteries from different manufacturers. ●Once the battery is set, close the battery cover securely.



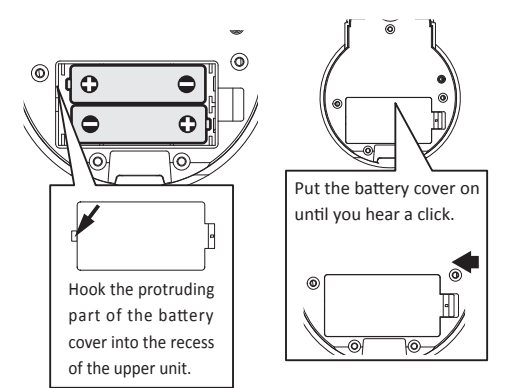
2. Open the battery cover at the bottom of the top unit.



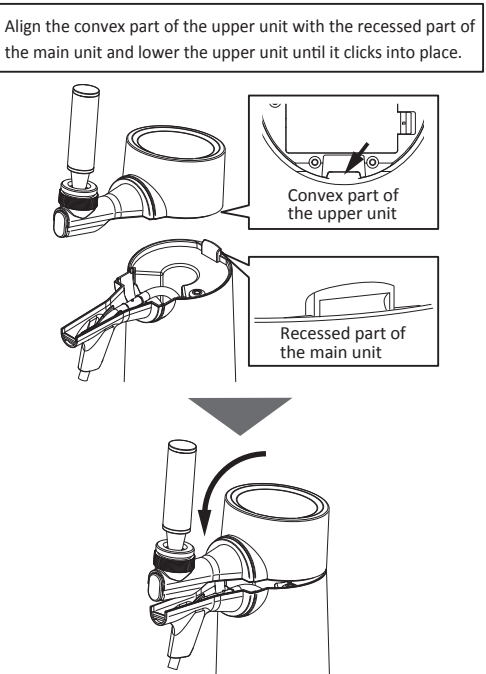
3. Insert 2 AA batteries (sold separately) in the direction shown as below.



4. Close the battery cover.

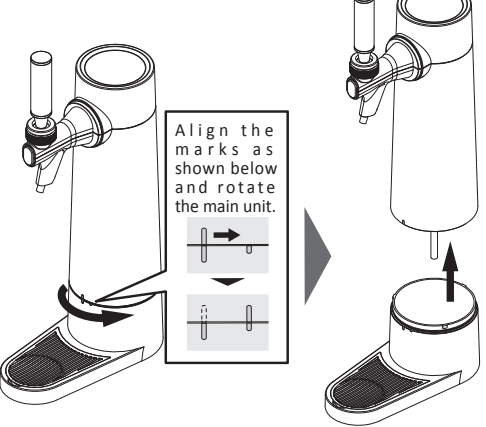


5. Attach the upper unit to the main unit.



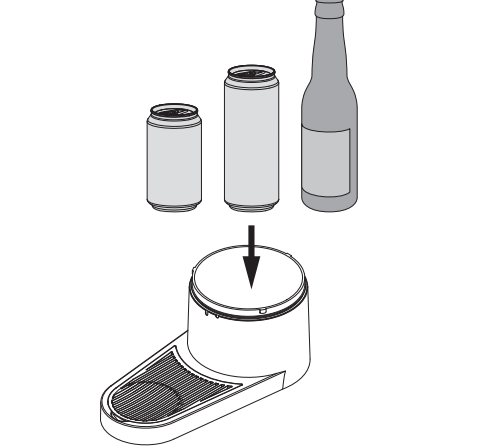
How to set a canned or bottled beer

1. Remove the main unit and lower unit.

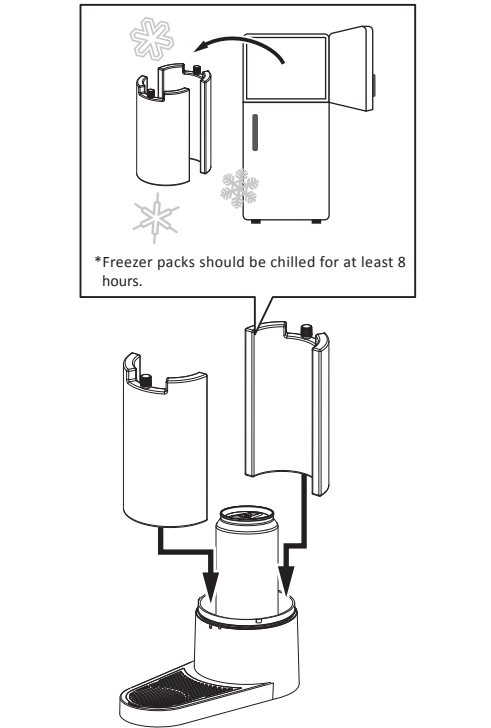


2. Open the lid of the canned/bottled beer and place it on top of the lower unit

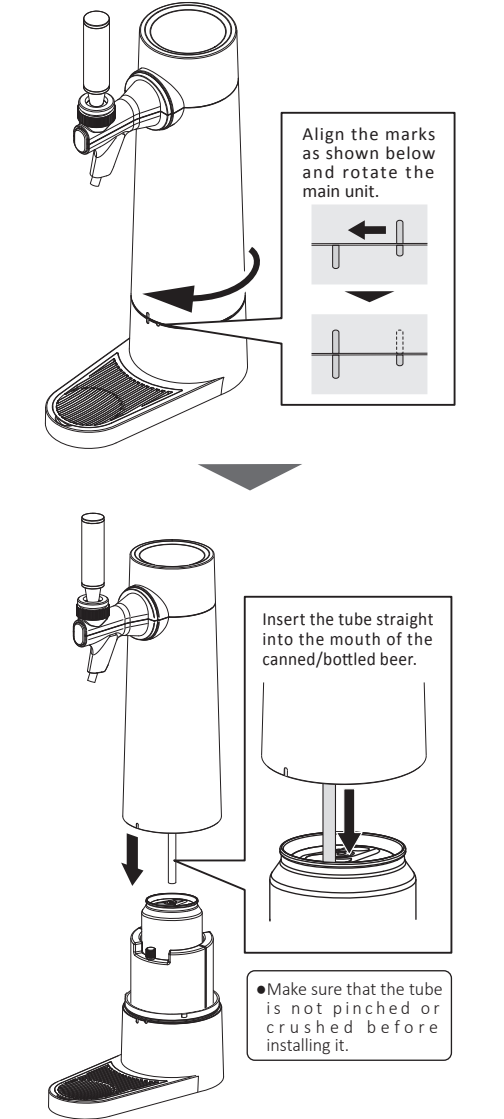
*Please do not injure yourself with the mouth of a canned beer or the cap of a bottled beer.



3. Set the frozen freezer packs around the cans/bottles of beer and between the lower unit as shown.



4. Insert the tube extending from the inside of the main unit straight into the mouth of the canned/bottled beer and attach the main unit to the lower unit.

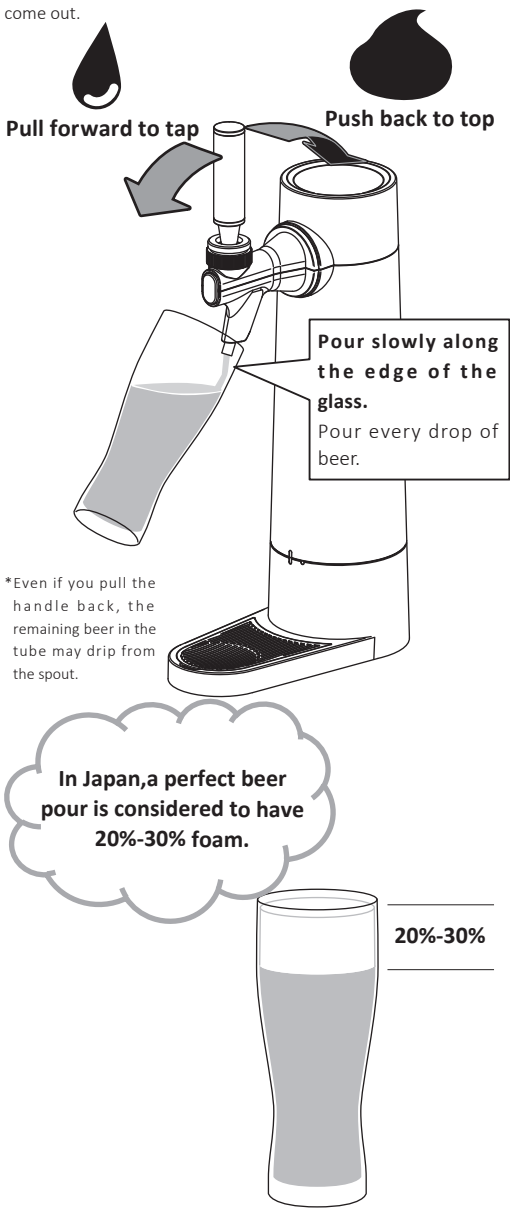


⚠ Make sure that the seal (O-ring) is properly installed at the joint. If the seal is not seated properly or is stuck in the grooves, the beer will not come out.

The seal (O-ring) is caught in grooves

How to pour

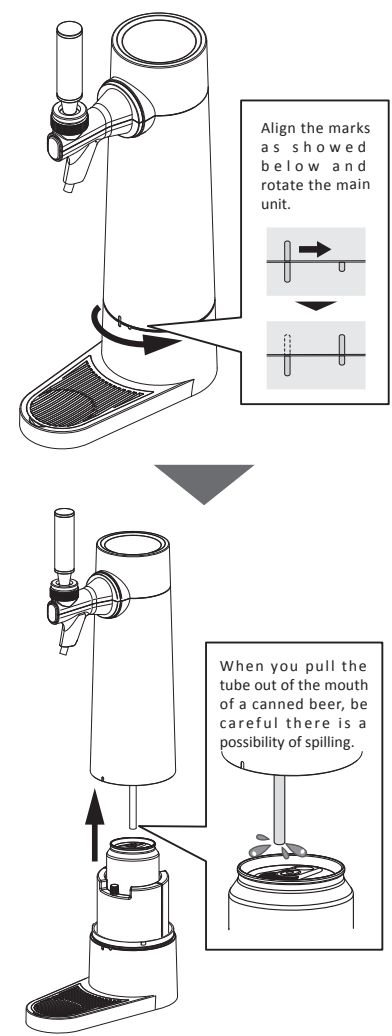
Gently and slowly pull the handle forward to you, the beer will come out.
Gently and slowly push the handle away from you, the foam will come out.



- If there is too much foam or does not result in thick foam, refer to "To enjoy thick foam".
- Do not apply undue force to the handle and do not push any direction other than to the front or back.

How to take out a canned beer

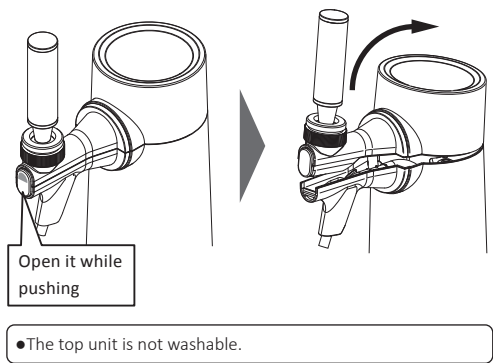
Remove the main unit from the lower unit and remove the canned beer.



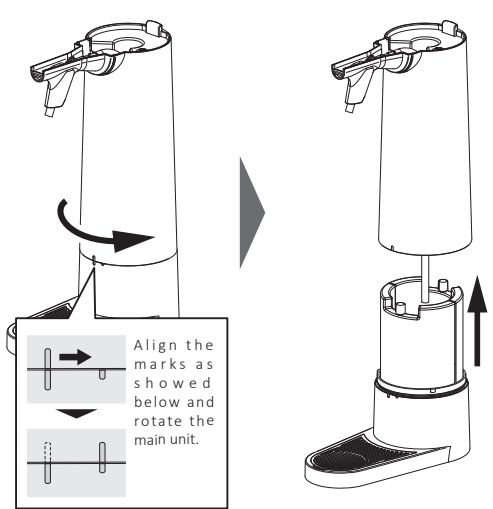
How to wash

Disassembly procedure

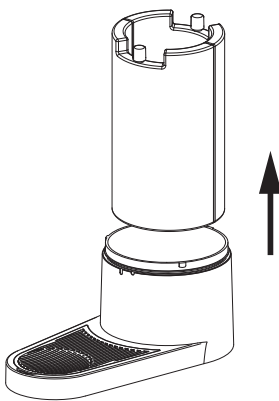
1. Remove the upper unit and the main unit.



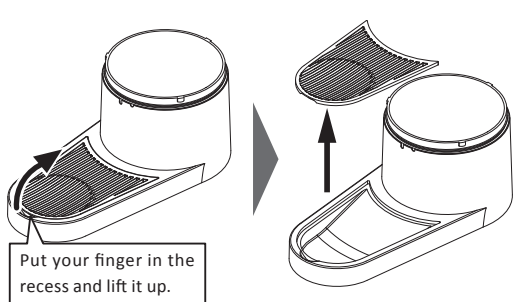
2. Remove the lower unit and the main unit.



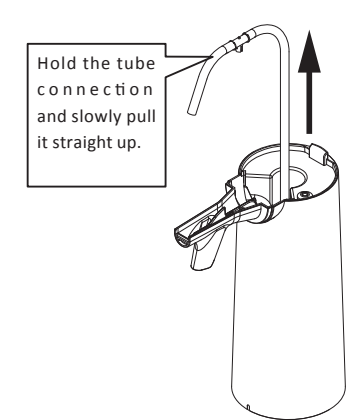
3. Take out the freezer packs from the main unit.



4. Remove the tray cover from the lower unit.



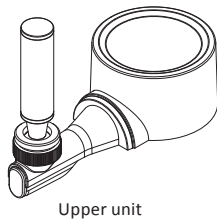
5. Remove the tube from the main unit.



How to clean each part

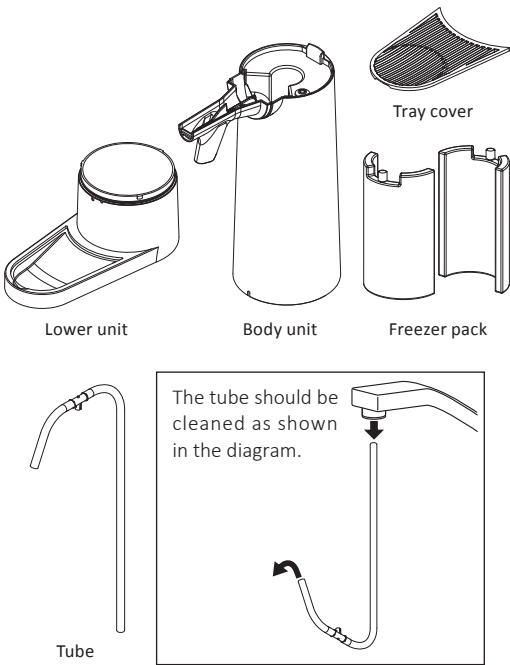
✗ Not washable

- Should be lightly wiped with a soft cloth. To remove severe stains, soak a soft cloth in water and wring well before wiping it off.



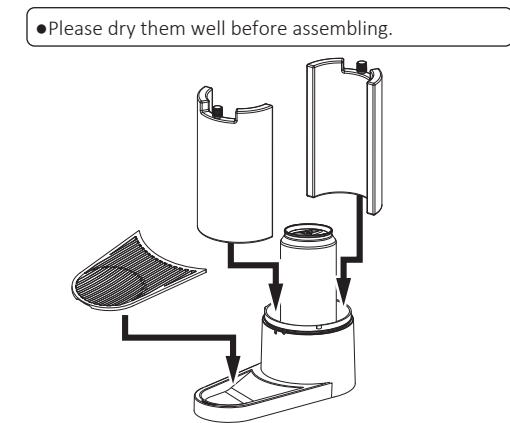
○ Can be washed

- Use dish detergent to clean, and do not use solvents or industrial detergents such as benzine or thinner.
- Use a soft sponge to clean, and do not use a metal scrubber, polish, cleanser or chemical razor.
- Do not use dishwasher or dish dryer.
- After cleaning, please dry well.

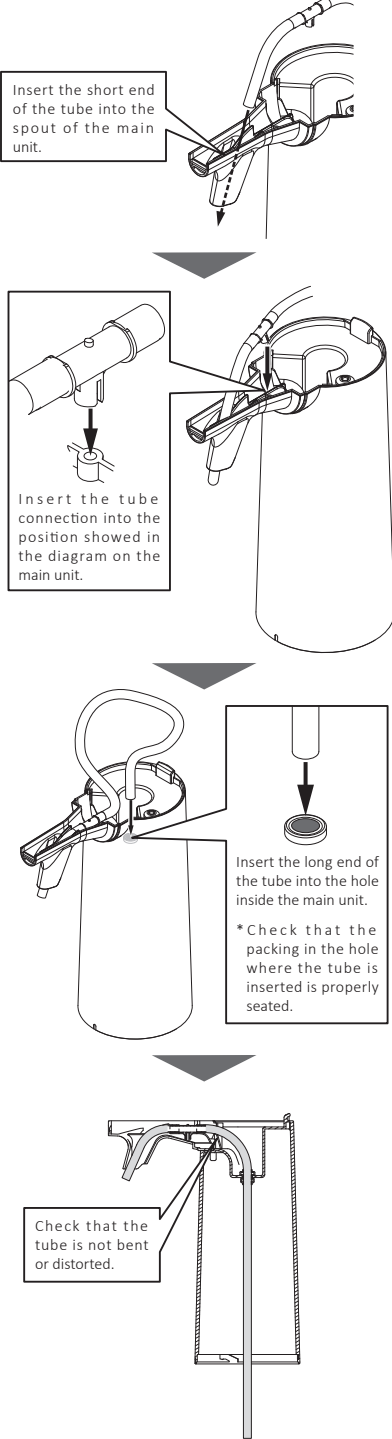


Assembly procedure

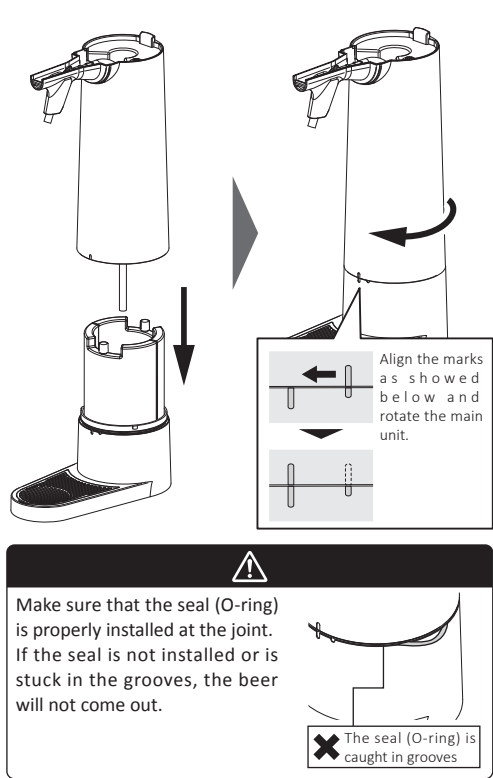
1. Put the freezer packs and tray cover on the lower unit.



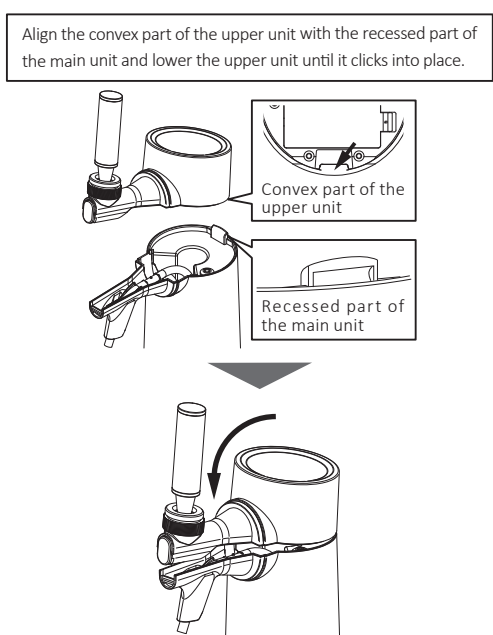
2. Attach the tube to the main unit.



3. Attach the main unit to the lower unit.



4. Attach the upper unit to the main unit.



PRODUCT SPECIFICATIONS

External dimensions:	W4.33 x D8.86 x H17.91(inch)
Compatible Can/	Can: 12oz /16oz *1
Bottle Size	Bottle: Ø less than 2.83 inches / height less than 10.24 inches
Power supply	AA alkaline battery / AA NiMH battery x 2 (sold separately)*2
Approximate battery life	About 1 hour
Heat resistant temperature	140°F
Coldest temperature	5°F
Material	ABS resin, silicone

*1: Body diameter 2.6-2.68 inches, diameter (outside of lid) 2.13-2.36 inches
*2: AA-size alkaline batteries / AA NiMH battery x 2 are not included.

*The copyright of this manual belongs to our company. No part of the content may be reproduced in whole or in part without permission.

*The design and specifications of the product are subject to change without notice due to improvements.

*The contents of this manual are subject to change without notice.

*Company names and product names mentioned in this manual are trademarks or registered trademarks of the respective companies.

GREEN HOUSE CO., LTD.

<https://www.green-house.co.jp/en/>