

COCKTAIL BEER SERVER

Ultrasonic cocktail beer server

Instruction manual

green house

Precautions for safe and proper use

(Please read this manual carefully before using this product.)

⚠ DANGER! Failure to observe the precautions in this indication may result in death or serious injury.

If defects such as smoke, heat, unusual smell, or unusual noises occur, turn the power off and stop using it. If you continue to use it, it may result in fire, injury, or burns. After confirming that there is no longer smoke, heat, unusual smell or noise, remove the batteries and contact the shop where you purchased the product.

⚠ WARNING! Failure to observe the precautions on this indication may result in death or serious injury.

- Do not disassemble the unit except to insert the batteries, set the bottled beer, or clean the unit.
- Do not make any modifications.
- Do not use canned drinks that is defective.
- Do not step on, ride on, throw, or drop it.
- It should only be operated by a parent or guardian and kept away from unsupervised children and infants.
- Do not place it in an unstable location.
- Do not place it in a high temperature area, such as near a heat appliance or in direct sunlight.
- Be sure to insert the specified batteries in the specified direction.
- Do not use a combination of different types of batteries, such as unused and used batteries, or batteries from different manufacturers.
- Once the batteries are set, close the battery cover securely.
- If the product will not be used for a long time, remove the batteries.
- Do not heat the batteries, disassemble it, or put it in water or fire.
- Keep the batteries out of the reach of children and infants.
- Do not put the unit in the refrigerator.
- Do not use in the microwave oven.
- Do not use for any purpose other than pouring a bottled or canned beverage.

⚠ CAUTION! Failure to follow the precautions on this display may result in injury or damage to property.

- Try not to injure yourself with the spout of the beverage can.
- Be sure to install the upper unit and the lower unit securely.
- Do not use with pinched or crushed tube.
- Do not apply undue force to the operating levers and do not tilt them except toward the front or back.
- Do not lift, tilt, shake or tip the product body after setting the beverage.
- As these products come in direct contact with the beverage, be sure to clean the unit and tubes before and after use and always keep them clean.
- The interior of the upper unit contains electronic components and should never be washed in water.
- Use dish detergent to clean the lower unit and packing, and do not use solvents or industrial detergents such as benzine or thinner.
- Use a soft sponge to clean the lower unit, and do not use a metal scrubber, polish, cleanser or chemical razor.
- Once the packing is removed, install it securely.
- Do not remove the packing in the mouth that is attached to the upper unit.
- Do not rinse the upper unit with water.
- Lightly wipe the upper unit with a soft cloth to remove any dirt.
- For severe stains, soak a soft cloth in water and wring it out thoroughly before wiping it off.
- Do not use a dishwasher or dish dryer.
- After cleaning, please dry well.

Restrictions

- Do not consume alcohol under the legal age in your area and please drink responsibly.
- Beverages and glasses are not included.
- Please read the caution notes on the beverage before using it.
- It is for use only with 12oz or 16oz canned or 16oz pet bottle (the diameter is under 2.76 inches, height is under 9.25 inches) of beer, low-malt beer, beer-like products, and non-alcoholic beer, and other soft drinks.

- Beer may spill or splash around when pouring or removing the product from a bottle of beer.
- Canned beer with solids in the cans cannot be used due to uneven suction.
- Even the operating handle is retracted, any beverage remaining in the tube may drip from the spout.
- Batteries not included.
- Do not use this product for business purposes.
- All other company and product names are trademarks or registered trademarks of their respective owners.
- The design and specifications of the product are subject to change without notice due to improvements.
- The color of the product image may differ from the actual product.

Disclaimer

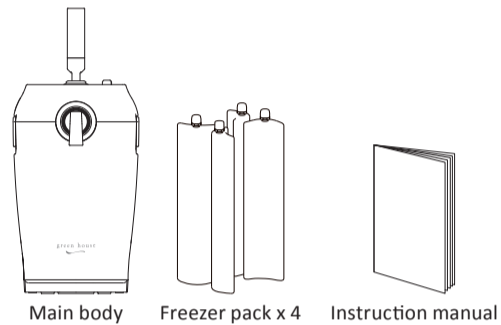
- We are not responsible for the use of the product if it is not used in accordance with the instructions in the instruction manual or packaging.
- We are not responsible for any damage caused by external factors such as drops, shocks, pressure, or loads.
- We are not responsible for any damage caused by natural disasters such as fire, earthquake, lightning, wind and water damage.
- We are not responsible for any failure due to wear from use.
- We cannot be held liable for any loss of business profit associated with the use of the product.
- We are not responsible for any failure of the related equipment during use of the product.
- We are not responsible for any inability to use the product due to compatibility with the relevant equipment.

About freezer pack

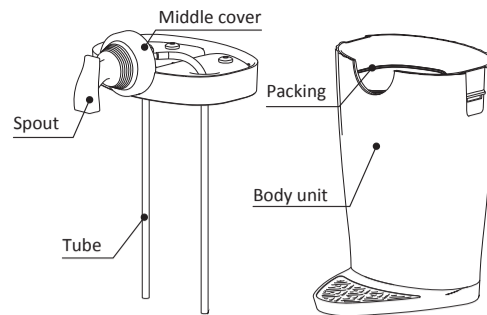
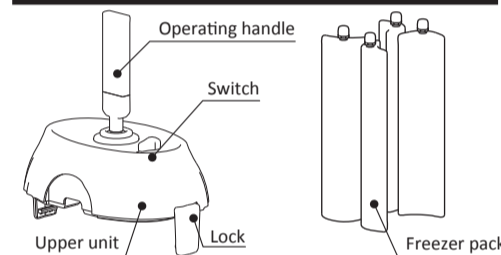
- Non-food, do not eat.
- Freeze it in the freezer for at least 8 hours before using it.
- It may be damaged by dropping or jostling.
- Rapid freezing may damage or deform it.
- If the contents leak, do not use and rinse the leaked contents with water.
- Do not leave it in direct sunlight.
- Do not heat it or place it near a heat source.
- Do not use in microwave oven.
- Condensation may form on the surface due to the temperature difference from the outside air.
- Keep out of the reach of children and infants and away from pets.

Contents

Please make sure all of the following items are included in the package.



Name of each part



Supported can and bottle sizes



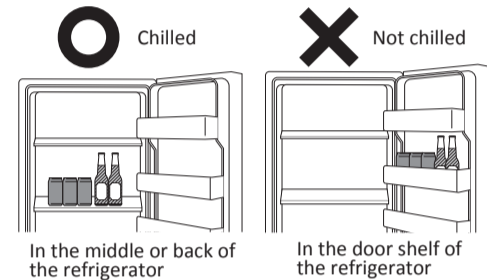
*Canned beer with solids in the cans cannot be used due to uneven suction.

*Even if you set the handle to the original position, the remaining beverage in the tube may drip from the spout. Especially when there is a large amount of beverage remaining, such as a 16oz can, it will drip a lot, so please pour the first 2-3 cups in succession.

To enjoy a thick foam

About the temperature of beer

Prepare cans or bottles, pet bottles to chilled to 39.2-42.8°F in the refrigerator. If the beverage is not chilled to the right temperature, there will be an excess of foam when serving.



Suitable temperature for the beverage: 39.2-42.8°F

The beverage should be chilled in the center or back of the refrigerator as it may not be chilled sufficiently in the refrigerator door shelf. Adjust the setting temperature so that the canned beer is at a suitable temperature of 39.2-42.8°F, as too high or too low a setting temperature in the refrigerator will not produce thick foam.

About the temperature of the serving glass

If the glass is dirty or warm, there may be an excess of foam when serving, and it may not produce thick foam. We recommend cleaning the glasses and letting them cool after they have dried naturally.

About the temperature of the tube (middle cover)

If the tube is warm, the amount of foams may be too much when the beer is poured and may not produce creamy foam. Chilling the middle cover in the refrigerator will reduce the bubbling when pouring the beer.

Beer and carbonated drinks

- Mixing beer and highly carbonated beverages may result in too much foam.
- Mixing beer with non-carbonated beverages may result in poor foam retention.

How to set the battery

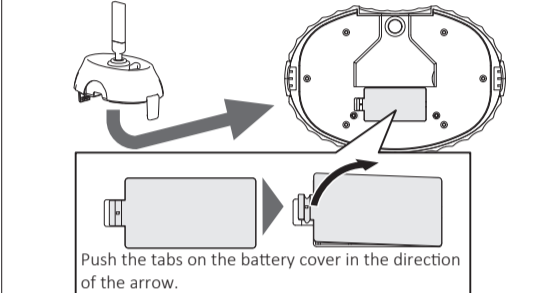
- Be sure to set the specified battery in the specified direction before using it.
- Do not use a combination of different types of batteries, such as unused and used batteries, or batteries from different manufacturers.
- Once the battery is set, close the battery cover securely.

1. Remove the upper unit from the main unit.

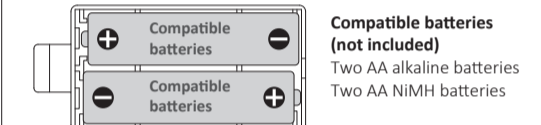
Release the left and right locks and remove the upper unit.



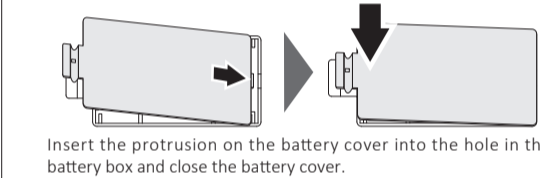
2. Open the battery cover at the bottom of the upper unit.



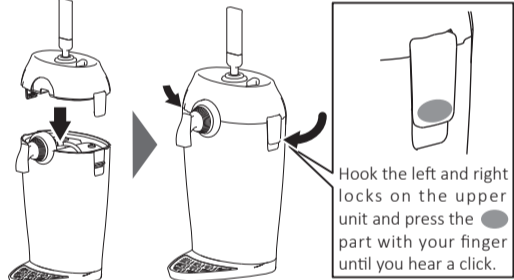
3. Insert two compatible batteries (sold separately) in the direction shown below.



4. Close the battery cover.



5. Attach the upper unit to the main unit.

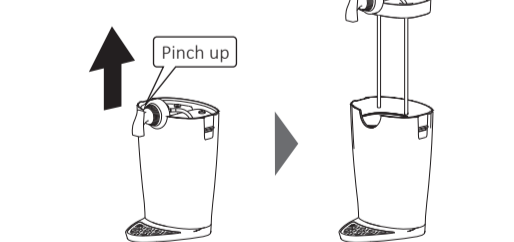


How to set the cans/ pet bottles

1. Remove the main unit and upper unit.

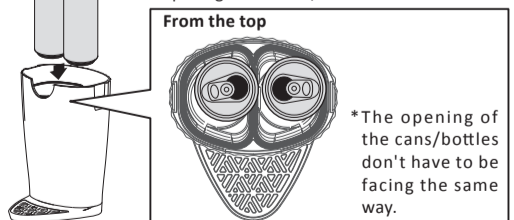


2. Remove the middle cover.

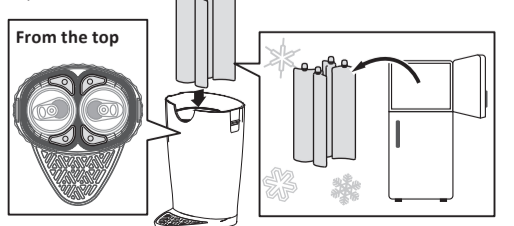


3. Open the cans/bottles and place them in the main unit.

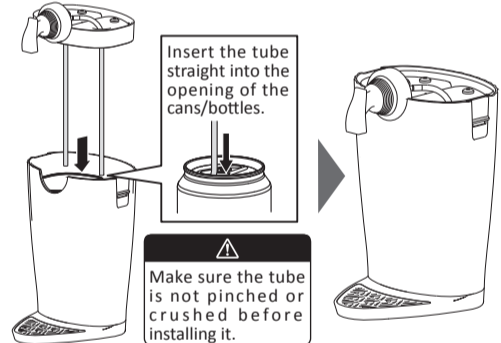
*Please do not injure yourself with the opening of the cans/bottles.



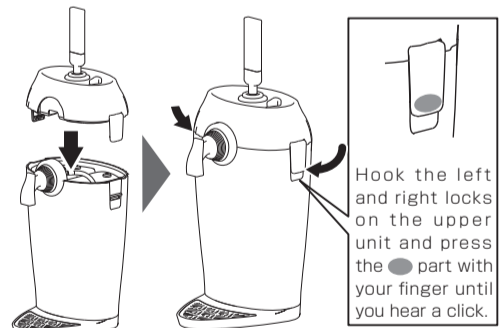
4. Set the chilled freezer packs in the gap between the cans/ pet bottles.



5. Insert the tube extending from the middle cover into the opening of the cans/bottles in a straight line and attach the middle cover to the main unit.



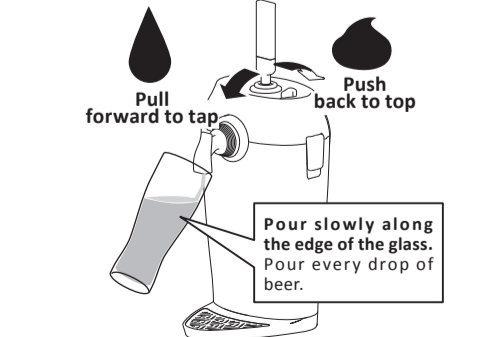
6. Attaching the upper unit to the main unit.



- Do not lift, tilt, shake or tip over the upper unit after loading the cans/bottles, as spilled beverages inside the product may cause the electronic components of the upper unit to malfunction.

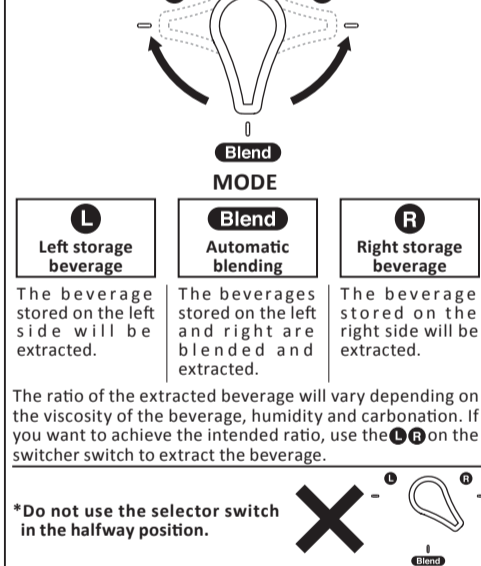
How to pour

Gently and slowly pull the handle forward to you, the beverage will come out. Gently and slowly push the handle backward from you, the foam will come out. *You can't make foams without beer in it.



*Even if you set the handle to the original position, the remaining beer in the tube may drip from the spout. Keep pouring for the first couple of cups, especially if there is a lot left in the beverage, such as a 16oz can, as it will drip.

Switch



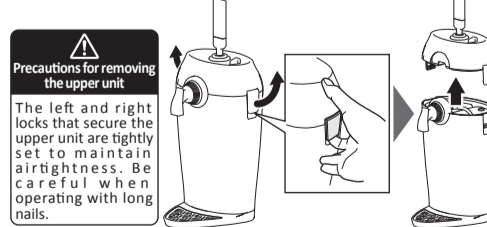
- Please place it on a flat and stable surface when use it.
- Do not apply excessive force to the operating handle and do not tilt it except toward the front or back.
- Do not lift, tilt, shake or knock down the product after setting cans/bottles.

Point What is the percentage of fine foam?
If there is too much foam or does not result in creamy foam, please refer "To enjoy a thick foam".
Generally, a perfect beer pour is considered to have 20%-30% foam.

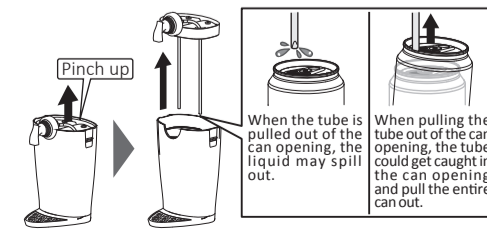
How to take out cans/pet bottles

1. Remove the main unit and the topper unit.

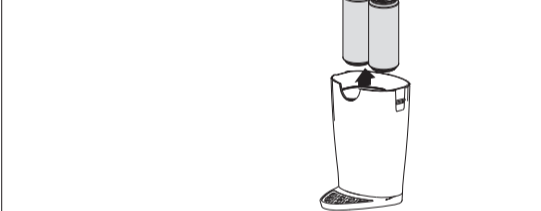
*Do not lift, tilt, shake, or tip the product body until the can is removed.



2. Remove the middle cover.



3. Remove the can/pet bottle.



How to clean

How to clean each part

Non-washable

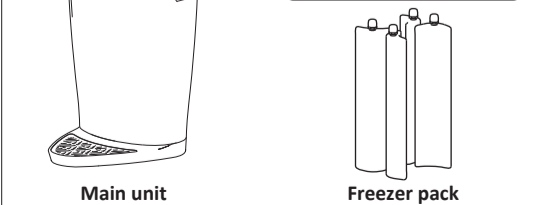
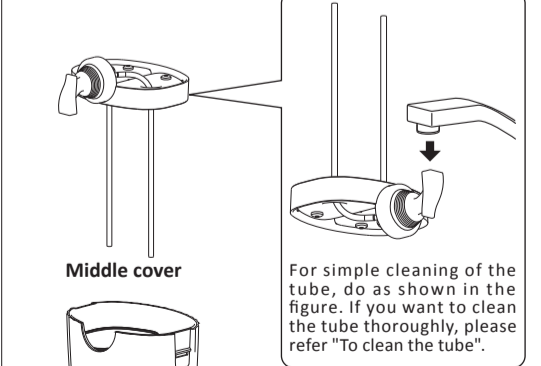
- Lightly wipe the upper unit with a soft cloth to remove any dirt. For severe stains, soak a soft cloth in water and wring it out thoroughly before wiping it off.

*The interior of the upper unit contains electronic components and should never be washed in water.



Washable

- Use dish detergent to clean, and do not use solvents or industrial detergents such as benzine or thinner.
- Use a soft sponge to clean, and do not use a metal scrubber, polish, cleanser or chemical razor.
- Do not use a dishwasher or dish dryer.
- After cleaning, please dry well.
- Do not disassemble the middle cover and do not remove the tube inside.



Please Turn Over