

# BOTTLE BEER FOAMER

green house

## Instruction manual Ver.1.0

### Precautions for safe and proper use

\*Please read this manual carefully before use.

**⚠ DANGER!** Failure to observe the precautions in this indication may result in death or serious injury.

•If defects such as smoke, heat, unusual smell, or unusual noise occur, stop operating and use of the product. If you continue to use it, it may result in fire, injury, or burns. After confirming that there is no longer smoke, heat, unusual smell or noise, remove the batteries and contact the shop where you purchased the product.

**⚠ WARNING!** Failure to observe the precautions on this indication may result in death or serious injury.

•Do not disassemble the unit except to insert the batteries, set the bottled beer, or clean the unit. •Do not make any modifications. •Do not use bottled beer that is defective. •Do not dump, submerge, throw, or drop it. •It should only be operated by a parent or guardian and kept away from unsupervised children and infants. •Do not place it in an unstable location. •Do not place it in a high temperature area, such as near a heat appliance or in direct sunlight. •Do not lift, lower, turn upside down, or move the product while it is in use. •Be sure to insert the specified batteries in the specified direction. •Do not use a combination of different types of batteries, such as unused and used batteries, or batteries from different manufacturers. •Once the batteries are set, close the battery cover securely. •If the product will not be used for a long time, remove the batteries. •Do not heat the batteries, disassemble it, or put it in water or fire. •Keep the batteries out of the reach of children and infants. •Do not put the unit in the refrigerator. •Do not use in the microwave oven. •Do not use for any purpose other than pouring a bottled beer.

**⚠ CAUTION!** Failure to follow the precautions on this display may result in injury or damage to property.

•Be sure to install the upper unit and the lower unit securely. •Always wash the lower unit before and after use to keep it clean. •Use dish detergent to clean the lower unit and packing, and do not use solvents or industrial detergents such as benzine or thinner. •Use a soft sponge to clean the lower unit, and do not use a metal scrubber, polish, cleanser or chemical razor. •Once the packing is removed, install it securely. •Do not remove the packing in the mouth that is attached to the upper unit. •Do not rinse the upper unit with water. •For severe stains, soak a soft cloth in water and wring it out thoroughly before wiping it off. •After cleaning, please dry well.

### Restrictions

•Do not consume alcohol under the legal age in your area and please drink responsibly. •Rechargeable batteries (NiMH batteries) may not be able to reach the drive voltage of the internal circuit and may not be able to produce bubbles. •Beer not included. •Please read the caution notes on the bottled beer before using it. •It is for use only with bottles (Bottle mouth out diameter  $\Phi 1.04 \pm 0.01$  inches / Bottle mouth inner diameter  $\Phi 0.69 \pm 0.06$  inches.) of beer, low-malt beer, beer-like products, and non-alcoholic beer, and should not be used with other beverages. •Beer may spill or splash around when pouring or removing the product from a bottle of beer. •Batteries not included. •Do not use this product for business purposes. •All other company and product names are trademarks or registered trademarks of their respective owners. •The design and specifications of the product are subject to change without notice due to improvements. •The color of the product image may differ from the actual product.

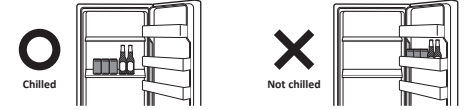
### Disclaimer

•We are not responsible for the use of the product if it is not used in accordance with the instructions in the instruction manual or packaging. •We are not responsible for any damage caused by external factors such as drops, shocks, pressure, or loads. •We are not responsible for any damage caused by natural disasters such as fire, earthquake, lightning, wind and water damage. •We are not responsible for any failure due to wear from use. •We cannot be held liable for any loss of business profit associated with the use of the product. •We are not responsible for any failure of the related equipment during use of the product. •We are not responsible for any inability to use the product due to compatibility with the relevant equipment.

### To enjoy a thick foam

#### About the temperature of beer

Prepare a bottled beer chilled to 39.2-42.8°F in the refrigerator. If the bottled beer is not chilled to the right temperature, there will be an excess of foam when serving.



In the middle or back of the refrigerator

In the door shelf of the refrigerator

**Suitable temperature for beer  
39.2-42.8°F**

Beer should be chilled in the center or back of the refrigerator as it may not be chilled sufficiently in the refrigerator door shelf. Adjust the setting temperature so that the beer is at a suitable temperature of 39.2-42.8°F, as too high or too low a setting temperature in the refrigerator will not produce thick foam.

#### About the temperature of the serving glass

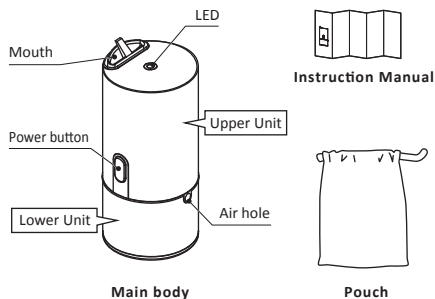
If the glass is dirty or warm, there may be an excess of foam when serving, and it may not produce thick foam.

### Product specifications

Compatible Bottle Size	Bottle mouth out diameter $\Phi 1.04 \pm 0.01$ inches / Bottle mouth inner diameter $\Phi 0.69 \pm 0.06$ inches
Product weight	Around 0.22 lbs
External dimensions	W16.7x D16.7 x H37.2(inch)
Power supply	AAA alkaline battery/ AAA NiMH battery x 2 (sold separately)
Maximum current consumption	About 700mA
Heat resistant temperature	Upper unit 140°F/ Lower unit 212°F
Coldest temperature	-5.8°F
Approximate battery life	About 150 times
Material	Heat-resistant ABS / Stainless steel / TPE / Silicone

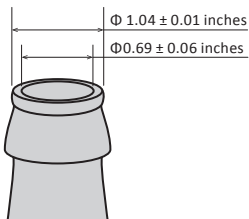
### Contents

Please make sure all of the following items are included in the package.



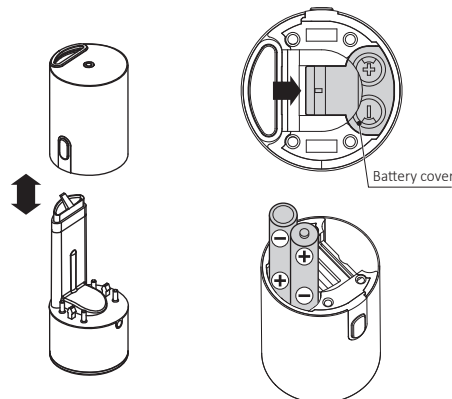
### Supported bottle sizes

For use with bottles (which have outer mouth diameter  $\Phi 1.04 \pm 0.01$  inches / inner diameter  $\Phi 0.69 \pm 0.06$  inches.) of beer, low-malt beer, beer-like products, and non-alcoholic beer.



### How to set the battery

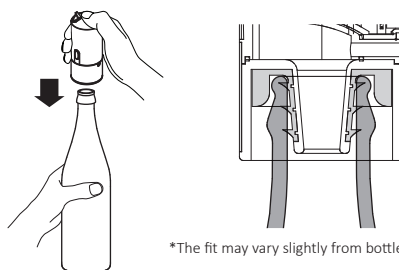
Remove the upper and lower units by pulling them straight up. Remove the battery cover from the upper unit and install the AAA batteries in the direction shown in the figure.



AAA alkaline batteries and AAA NiMH batteries can be used.

### How to Set it in a bottle

Hold the bottle firmly on a table, and screw the insertion slot on the bottom all the way to the mouth of the bottle.

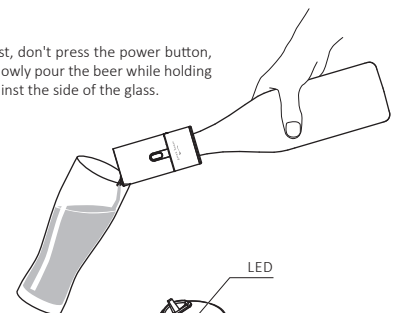


\*The fit may vary slightly from bottle to bottle.

### How to pour a beer

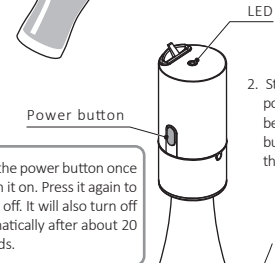
**\*Make sure that the product is firmly attached to the bottle before pouring.**

1. At first, don't press the power button, but slowly pour the beer while holding it against the side of the glass.



2. Stop pouring after you poured about 70% of the beer, press the power button and check that the LED is lighted up.

Press the power button once to turn it on. Press it again to turn it off. It will also turn off automatically after about 20 seconds.



3. While the LED is on, pour the foam along the rim of the glass.

